

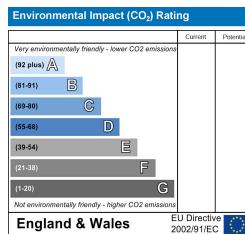
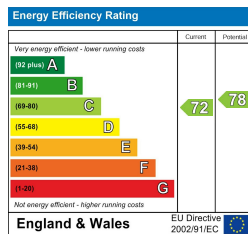
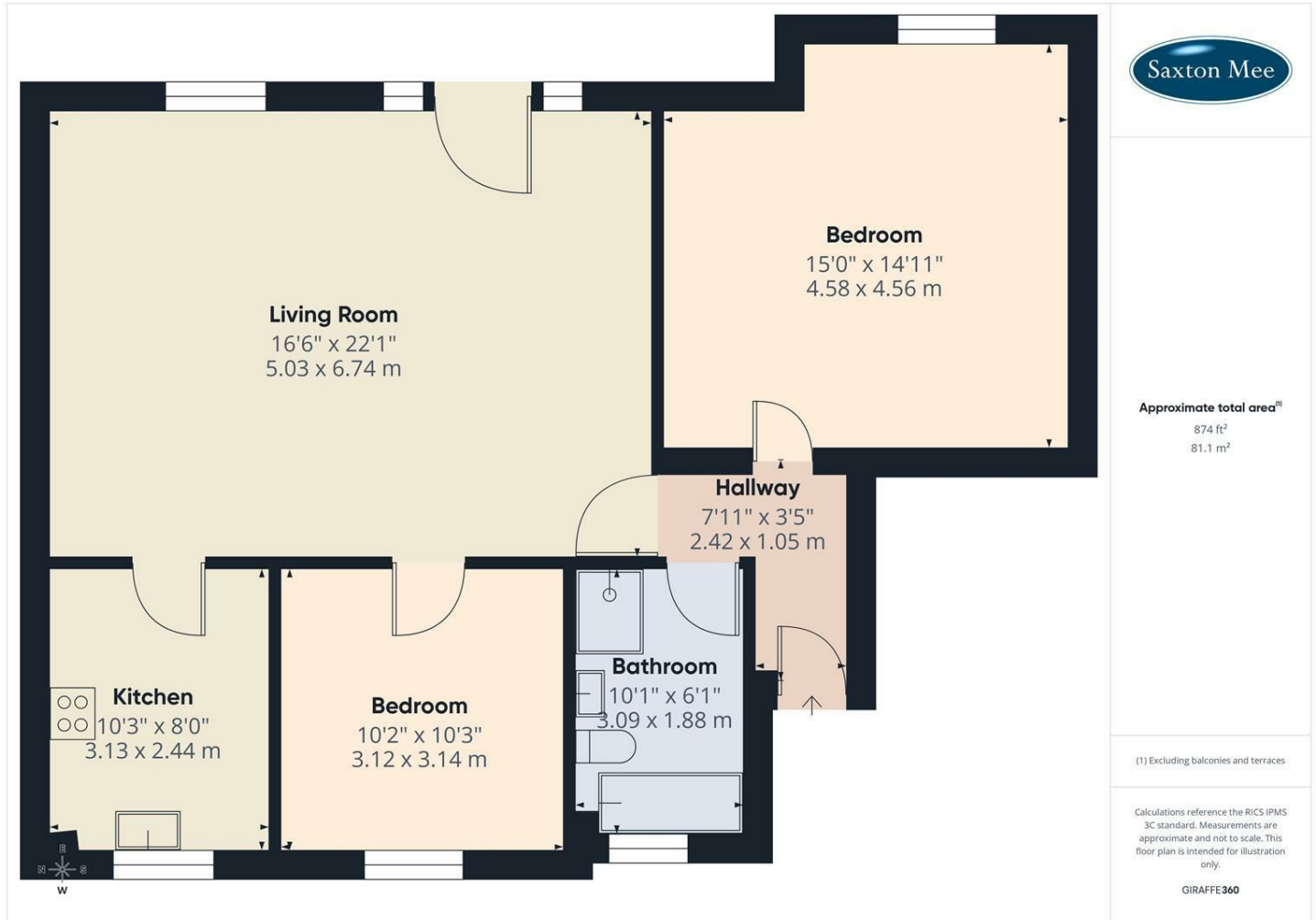


Apt 6 Newfield Place, Dore S17 3ER £925 Per Calendar Month

Situated in one of Sheffield's popular residential areas is this outstanding two bedroom ground floor apartment with parking and gas central heating. Designed to an extremely high specification with laminated flooring throughout, fitted maple kitchens and integrated appliances comprising of stainless steel hob and oven, fridge and dishwasher.

The property briefly comprises of; spacious living area and luxury bathroom with separate shower cubicle. Two double bedrooms. Outside the property there are well maintained communal gardens. Viewing is essential to appreciate the generous accommodation offered.

UNFURNISHED 12 MONTH TENANCY. RESTRICTIONS: No smokers. Energy Efficiency Rating C. Council Tax Band D



Banner Cross
Hathersage
Bakewell
Matlock
www.saxtonmee.co.uk

949-951 Ecclesall Road, Sheffield S11 8TN
3 Bank View, Main Road, Hathersage S32 1BB
Matlock Street, Bakewell DE45 1EE
27 Causeway Lane, Matlock, DE4 3AR

T: 0114 268 3241
T: 01433 650009
T: 01629 815307
T: 01629 828250

E: bannercross@saxtonmee.co.uk
E: hathersage@saxtonmee.co.uk
E: bakewell@saxtonmee.co.uk
E: matlock@saxtonmee.co.uk